



PRODUCT CATALOG 2023



Representative Materials Company
1 (408) 883-3806
www.RepMaterials.com



Quality Control



RMC's Conduit and Fittings have excellent protection, strength, and ductility for raceway systems. Manufactured with high strength steel, our conduit is free of flaking, chipping, or corrosion.

Tested & Evaluated

At RMC, we take our commitment to quality control seriously. From the moment the materials arrive at our facility to the final packaging of our conduit products, we have a thorough testing process in place. Our goal is to deliver top-quality products that meet the highest standards of excellence.

Quality Assured

Quality control procedures are in place from the time materials are received at the facility to when the finished conduit and fittings are packaged and readied for shipping.

A three step process to guarantee quality

Step 1: Rigorous Assessments

Procurement of raw materials, production, and final product delivery - every stage undergoes rigorous examination by our team of experts. We understand that all materials and processes play a crucial role in the overall performance of our conduit raceway system, that's why we meticulously scrutinize the quality of our materials and manufacturing processes.

Step 2: Intensive Research and Development

Innovation is at the core of what we do. We strive to continuously improve the quality of our products and manufacturing efficiencies to provide the highest standards in the industry. We are dedicated to improving the ease of installation and corrosion resistance of our comprehensive conduit systems through rigorous research and development efforts.

Step 3: Internal Audits

To maintain the highest level of quality control, we conduct regular internal audits. These official inspections allow us to identify areas for improvement and refine our quality control systems and best practices.



Representative Materials Company

Representative Materials Company LLC
10061 Bubb Road - Suite 100
Cupertino, CA 95014

1 (408) 883-3806
RepMaterials.com



Electrical Metallic Tubing - (EMT) Conduit



RMC's Electrical Metallic Conduit (EMT) (UL797) has excellent protection, strength, and ductility for raceway systems. Our EMT is manufactured with high strength steel, and produced by the electrical resistance welding process which ensures continuous weld seams that are free from interior defects. We rigorously test our EMT to provide field bending without flaking, kinking or cracking.



Features

- Galvanized coating provides enhanced corrosion protection
- Greater wire capacity and less friction between wall to wire to minimize wire chafing.
- Interior Zinc Coating provides a smooth surface for faster wire pulling.

Listings

- Underwriters Laboratories Standard for EMT-Steel (UL797) file # E531582
- American National Standards Institute (ANSI® C80.3)
- National Electric Code® Article 358

Dimension and Weight Chart (EMT & Color EMT) and Packing Schedule (EMT & Color EMT)

ELECTRICAL METALLIC TUBING (EMT)																	
ITEM #	TRADE SIZE		NOMINAL WT. PER 100FT (30.5M)		NOMINAL OUTSIDE DIAMETER		NOMINAL WALL THICKNESS		COLOR TAPE	QUANTITY IN BUNDLE		QUANTITY PER LIFT				WEIGHT/LIFT	
	U.S.	Metric	Lbs.	Kg.	in.	mm.	in.	mm.		Feet	Meters	PCS	BD's	Feet	Meters	Lbs.	Kg.
EMTCT05	1/2	16	30	13.5	0.706	17.93	0.042	1.07	Black	100	30.5	-	70	7000	2134	2083	945
EMTCT07	3/4	21	46	20.7	0.922	23.42	0.049	1.24	Red	100	30.5	-	50	5000	1524	2282	1,035
EMTCT10	1	27	67	30.6	1.163	29.54	0.057	1.45	Blue	100	30.5	-	30	3000	914	2024	918
EMTCT12	1-1/4	35	101	45.6	1.510	38.35	0.065	1.65	Red	50	15.2	-	40	2000	610	2011	912
EMTCT15	1-1/2	41	116	52.8	1.740	44.20	0.065	1.65	Black	50	15.2	-	30	1500	457	1746	792
EMTCT20	2	53	148	67.2	2.197	55.80	0.065	1.65	Blue	30	9.14	-	40	1200	366	1777	806
EMTCT25	2-1/2	63	216	97.9	2.875	73.03	0.072	1.83	Black	-	-	61	-	610	186	1316	597
EMTCT30	3	78	265	120.0	3.500	88.90	0.072	1.83	Blue	-	-	51	-	510	155	1349	612
EMTCT35	3-1/2	91	348	158.0	4.000	101.60	0.083	2.11	Black	-	-	37	-	370	113	1290	585
EMTCT40	4	103	392	178.0	4.500	114.30	0.083	2.11	Blue	-	-	30	-	300	91	1179	534

Notes: 1. Applicable tolerances - Length: 10ft. ± 1/4". Outside Diameter: 1/2"-2" ± 0.005"; 2 1/2" ± 0.010"; 3" ± 0.015"; 3 1/2" - 4" ± 0.020".



Galvanized Rigid Conduit - (GRC)



RMC's Galvanized Rigid Conduit (GRC) (UL6) has excellent protection, strength, and ductility for raceway systems. Our rigid conduit is manufactured from high strength hot-dipped galvanized steel and produced by the electrical resistance welding process which ensures continuous weld seams that that will not split or crack at the weld and are free from interior defects. Our precision threaded ends ensure fast assembly in the field.



Features

- Rigid conduit provides exceptional physical protection, reduces exposure to EMF and shields against electromagnetic interference.
- Hot dipped galvanized coating provides enhanced corrosion protection.
- Impact-resistant and non-combustible.

Listings

- Underwriters Laboratories Standard for rigid conduit (UL6) file # E531580
- American National Standards Institute (ANSI® C80.1)
- National Electric Code® Article 344

Dimension and Weight Chart and Packing Schedule (GRC)

GALVANIZED RIGID CONDUIT (GRC)																	
PART NUMBER	TRADE SIZE		NOMINAL WT. PER 100FT (30.5M)		NOMINAL OUTSIDE DIAMETER		NOMINAL WALL THICKNESS		COLOR TAPE	QUANTITY IN BUNDLE		QUANTITY PER LIFT				WEIGHT/LIFT	
	U.S.	Metric	Lbs.	Kg.	in.	mm.	in.	mm.		Feet	Meters	PCS	BD's	Feet	Meters	Lbs.	Kg.
RMCCT05	1/2	16	82	37.2	0.840	21.3	0.104	2.60	Black	100	30.5	-	25	2500	762	2050	930
RMCCT07	3/4	21	109	49.4	1.050	26.7	0.107	2.70	Red	50	15.2	-	40	2000	610	2178	988
RMCCT10	1	27	161	73.0	1.315	33.4	0.126	3.20	Blue	50	15.2	-	25	1250	381	2013	913
RMCCT12	1-1/4	35	218	98.9	1.660	42.2	0.133	3.40	Red	-	-	90	-	900	274	1962	890
RMCCT15	1-1/2	41	263	119	1.900	48.3	0.138	3.50	Black	-	-	80	-	800	244	2099	952
RMCCT20	2	53	350	159	2.375	60.3	0.146	3.70	Blue	-	-	60	-	600	183	2103	954
RMCCT25	2-1/2	63	559	254	2.875	73.0	0.193	4.90	Black	-	-	37	-	370	113	2072	940
RMCCT30	3	78	727	330	3.500	88.9	0.205	5.20	Blue	-	-	30	-	300	91	2183	990
RMCCT35	3-1/2	91	880	399	4.000	101.6	0.215	5.50	Black	-	-	25	-	250	76	2200	998
RMCCT40	4	103	1030	467	4.500	114.3	0.225	5.70	Blue	-	-	20	-	200	61	2059	934
RMCCT50	5	129	1400	635	5.563	141.3	0.245	6.20	Blue	-	-	15	-	150	46	2101	953
RMCCT60	6	155	1840	835	6.625	168.3	0.266	6.80	Blue	-	-	10	-	100	30	1841	835

Notes: 1. Applicable tolerances - Length: 10ft. ± 1/4". Outside Diameter: 1/2" ± 0.015"; 2 1/2"-4" ± 0.025"; 5"-6" ± 1"



EMT Standard Elbows



Our EMT conduit standard elbows are designed to gradually change the direction of the conduit. EMT elbows are available in 90°, 45°, 30°, 22.5°, 15°, and custom degrees of bend.

Produced in standard trade sizes from ½" to 4", our EMT elbows are manufactured from our high quality EMT conduit, in accordance with the latest specifications and standards of ANSI C80.3 (UL797).

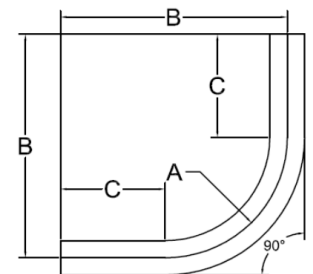


Features

- Elbows are produced in standard trade sizes from 1/2" to 4"
- Made from high-grade mild strip steel for durability and sustainability
- Galvanized EMT

Listings

- Underwriters Laboratories Standard for EMT-Steel (UL797) file # E531582
- American National Standards Institute (ANSI® C80.3)
- National Electric Code® Article 358



90° dimensional drawing

Dimension and Weight Chart (EMT) and Packing Schedule (EMT)

90° ELECTRIC METALLIC TUBING (EMT) STANDARD RADIUS ELBOWS								
ITEM #	UPC	SIZE	MIN. UL RADIUS "A"	OFFSET "B"	STRAIGHT LENGTH "C"	WEIGHT/100PCS	PCS/CARTON	WEIGHT/CARTON
			in.	in.	in.	lbs.		lbs.
EMTEL0590	00810138700051	1/2"	4	5.69	1.67	24	50	12
EMTEL0790	00810138700112	3/4"	4.5	6.65	2.16	43	50	22
EMTEL1090	00810138700174	1"	5.75	8.11	2.36	77	20	15
EMTEL1290	00810138700235	1-1/4"	7.25	10	2.76	142	20	28
EMTEL1590	00810138700297	1-1/2"	8.25	11.41	3.15	187	10	19
EMTEL2090	00810138700358	2"	9.5	13.74	4.25	288	10	29
EMTEL2590	00810138700419	2-1/2"	11	15.75	5.24	467	50	234
EMTEL3090	00810138700471	3"	13	18.86	5.87	685	35	240
EMTEL3590	00810138700532	3-1/2"	15	21.73	6.73	1039	35	364
EMTEL4090	00810138700594	4"	16	23.11	7.13	1285	25	321

Sizes 2-1/2" and larger shipped in palletized cartons or bulk. Radius A is the minimum per UL797. Dimensions B and C are reference.



Rigid Standard Elbows



Our Rigid conduit standard elbows are available in 90°, 45°, 30°, 22.5°, 15°, and custom degrees of bend.

Rigid Conduit Elbows are manufactured from prime conduit shell in accordance with the latest specifications and standard of ANSI C80.1(UL6).

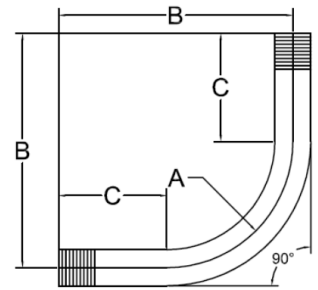


Features

- Elbows are produced in standard trade sizes from 1/2" to 6"
- Made from high-grade mild strip steel for durability and sustainability
- Galvanized Rigid Steel

Listings

- Underwriters Laboratories Standard for rigid conduit (UL6) file # E531580
- American National Standards Institute (ANSI® C80.1)
- National Electric Code® Article 344



90° dimensional drawing

Dimension and Weight Chart and Packing Schedule (GRC)

90° RIGID CONDUIT (GRC) STANDARD RADIUS ELBOWS								
ITEM #	UPC	SIZE	MIN. UL RADIUS "A"	OFFSET "B"	STRAIGHT LENGTH "C"	WEIGHT/100PCS	PCS/CARTON	WEIGHT/CARTON
			in.	in.	in.	lbs.		lbs.
RMCEL0590	00810138702321	1/2"	4	5.69	1.67	66	50	33
RMCEL0790	00810138702376	3/4"	4.5	6.65	2.16	104	50	52
RMCEL1090	00810138702420	1"	5.75	8.11	2.36	185	20	37
RMCEL1290	00810138702475	1-1/4"	7.25	10	2.76	307	20	61
RMCEL1590	00810138702529	1-1/2"	8.25	11.41	3.15	422	10	42
RMCEL2090	00810138702574	2"	9.5	13.74	3.54	683	10	68
RMCEL2590	00810138702628	2-1/2"	11	15.75	4.72	1212	50	606
RMCEL3090	00810138702673	3"	13	18.86	5.32	1884	35	659
RMCEL3590	00810138702727	3-1/2"	15	21.73	6.1	2624	35	919
RMCEL4090	00810138702772	4"	16	23.11	6.5	3372	25	843
RMCEL5090	00810138702826	5"	24	35.16	11.16	6997	BULK	1,749
RMCEL6090	00810138702871	6"	30	43.27	13.26	11286	BULK	2,822

Sizes 2-1/2" and larger shipped in palletized cartons or bulk, with thread protectors on each end. Radius A is the minimum per UL6. Dimensions B and C are reference dimensions.



EMT Special Radius Elbows



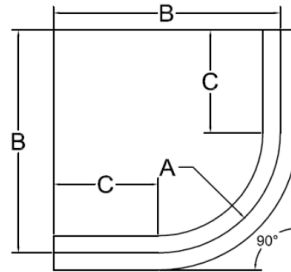
Our EMT Special Radius Elbows are manufactured from our high quality EMT conduit. EMT Special Radius Elbows are specifically designed to provide a smooth and gradual change in direction.

Our EMT elbows are manufactured in accordance with the latest specifications and standards of ANSI C80.3 (UL797).



Product Range

- Trade Sizes: 1/2" to 4"
- Stocking Radii: 24", 36", and 48"
- Special Order Radii: 60", 72", 96", 120", 144", and 150"



90° dimensional drawing

Features

- Elbows are produced in standard trade sizes from 1/2" to 4"
- Made from high-grade mild strip steel for durability and sustainability
- Uniform galvanized protection and smoothness on the interior and exterior coatings.

Listings

- Underwriters Laboratories Standard for EMT-Steel (UL797) file # E531582
- American National Standards Institute (ANSI® C80.3)
- National Electric Code® Article 358



90° EMT Special Radius Elbows



Dimension and Weight Chart (EMT) and Packing Schedule (EMT)

90° ELECTRIC METALLIC TUBING (EMT) SPECIAL RADIUS ELBOWS								
ITEM #	UPC	SIZE	MIN. UL RADIUS "A"	OFFSET "B"	STRAIGHT LENGTH "C"	WEIGHT/100PCS	PCS/CARTON	WEIGHT/CARTON
			in.	in.	in.	lbs.		lbs.
EMTSW109018	00810138703663	1" X 90° X 18"	18	28	11	2784	-	1,392
EMTSW129018	00810138703670	1-1/4" X 90° X 18"	18	28	11	2919	-	1,460
EMTSW159018	00810138703687	1-1/2" X 90° X 18"	18	28	11	3027	-	1,513
EMTSW209018	00810138700853	2" X 90° X 18"	18	28	11	765	70	536
EMTSW109024	00810138704103	1" X 90° X 24"	24	35	11	339	-	-
EMTSW129024	00810138704110	1-1/4" X 90° X 24"	24	35	11	511	-	-
EMTSW159024	00810138700778	1-1/2" X 90° X 24"	24	35	11	599	70	419
EMTSW209024	00810138700860	2" X 90° X 24"	24	35	11	765	70	536
EMTSW259024	00810138700921	2-1/2" X 90° X 24"	24	35	11	1073	70	751
EMTSW309024	00810138700983	3" X 90° X 24"	24	35	11	1307	48	627
EMTSW359024	00810138703694	3-1/2" X 90° X 24"	24	35	11	1735	40	694
EMTSW409024	00810138701041	4" X 90° X 24"	24	35	11	1954	40	782
EMTSW109036	00810138704127	1" X 90° X 36"	36	47	11	452	-	316
EMTSW129036	00810138700716	1-1/4" X 90° X 36"	36	47	11	682	70	477
EMTSW159036	00810138700785	1-1/2" X 90° X 36"	36	47	11	783	70	548
EMTSW209036	00810138700877	2" X 90° X 36"	36	47	11	999	70	699
EMTSW259036	00810138700938	2-1/2" X 90° X 36"	36	47	11	1411	70	988
EMTSW309036	00810138700990	3" X 90° X 36"	36	47	11	1719	48	825
EMTSW359036	00810138703700	3-1/2" X 90° X 36"	36	47	11	2282	40	913
EMTSW409036	00810138701058	4" X 90° X 36"	36	47	11	2570	40	1,028
EMTSW109048	00810138704134	1" X 90° X 48"	48	60	11	650	-	-
EMTSW129048	00810138704141	1-1/4" X 90° X 48"	48	60	11	700	-	-
EMTSW159048	00810138700792	1-1/2" X 90° X 48"	48	60	11	967	70	677
EMTSW209048	00810138700884	2" X 90° X 48"	48	60	11	1233	70	863
EMTSW259048	00810138700945	2-1/2" X 90° X 48"	48	60	11	1786	70	1,250
EMTSW309048	00810138701003	3" X 90° X 48"	48	60	11	2176	48	1,044
EMTSW359048	00810138703717	3-1/2" X 90° X 48"	48	60	11	2888	40	1,155
EMTSW409048	00810138701065	4" X 90° X 48"	48	60	11	3253	40	1,301
EMTSW109060	00810138704158	1" X 90° X 60"	60	72	11	670	-	-
EMTSW129060	00810138704165	1-1/4" X 90° X 60"	60	72	11	1010	-	-
EMTSW159060	00810138703946	1-1/2" X 90° X 60"	60	72	11	1160	70	812
EMTSW209060	00810138703953	2" X 90° X 60"	60	72	11	1480	70	1,036
EMTSW259060	00810138703960	2-1/2" X 90° X 60"	60	72	11	2160	70	1,512
EMTSW309060	00810138703977	3" X 90° X 60"	60	72	11	2650	48	1,272
EMTSW359060	00810138703984	3-1/2" X 90° X 60"	60	72	11	3480	40	1,392
EMTSW409060	00810138703991	4" X 90° X 60"	60	72	11	3920	40	1,568

Sizes 2-1/2" and larger shipped in palletized cartons or bulk. Radius A is the minimum per UL797. Dimensions B and C are reference dimensions. All dimensions are approximate. All special radius elbows are noncancelable and nonreturnable.



45° EMT Special Radius Elbows



Dimension and Weight Chart (EMT) and Packing Schedule (EMT)

45° ELECTRIC METALLIC TUBING (EMT) SPECIAL RADIUS ELBOWS								
ITEM #	UPC	SIZE	MIN. UL RADIUS "A"	OFFSET "B"	STRAIGHT LENGTH "C"	WEIGHT/100PCS	PCS/CARTON	WEIGHT/CARTON
			in.	in.	in.	lbs.		lbs.
EMTSW104518	00810138700600	1" X 45° X 18"	18	12.5	11	212	70	148
EMTSW124518	00810138700662	1-1/4" X 45° X 18"	18	12.5	11	320	70	224
EMTSW154518	00810138700723	1-1/2" X 45° X 18"	18	12.5	11	367	70	257
EMTSW204518	00810138700808	2" X 45° X 18"	24	12.5	11	469	70	328
EMTSW104524	00810138700617	1" X 45° X 24"	24	14.84	11	240	70	168
EMTSW124524	00810138700679	1-1/4" X 45° X 24"	24	14.84	11	362	70	253
EMTSW154524	00810138700730	1-1/2" X 45° X 24"	24	14.84	11	416	70	291
EMTSW204524	00810138700815	2" X 45° X 24"	24	14.84	11	530	70	371
EMTSW254524	00810138700891	2-1/2" X 45° X 24"	24	14.84	11	734	70	514
EMTSW304524	00810138700952	3" X 45° X 24"	24	14.84	11	894	48	429
EMTSW354524	00810138703595	3-1/2" X 45° X 24"	24	14.84	11	1186	40	474
EMTSW404524	00810138701010	4" X 45° X 24"	24	14.84	11	1336	40	534
EMTSW104536	00810138700631	1" X 45° X 36"	36	18.35	11	290	70	203
EMTSW124536	00810138700686	1-1/4" X 45° X 36"	36	18.35	11	438	70	307
EMTSW154536	00810138700747	1-1/2" X 45° X 36"	36	18.35	11	503	70	352
EMTSW204536	00810138700822	2" X 45° X 36"	36	18.35	11	641	70	449
EMTSW254536	00810138700907	2-1/2" X 45° X 36"	36	18.35	11	904	70	633
EMTSW304536	00810138700969	3" X 45° X 36"	36	18.35	11	1101	48	528
EMTSW354536	00810138703601	3-1/2" X 45° X 36"	36	18.35	11	1461	40	584
EMTSW404536	00810138701027	4" X 45° X 36"	36	18.35	11	1646	40	658
EMTSW104548	00810138700648	1" X 45° X 48"	48	22.55	11	346	70	242
EMTSW124548	00810138700693	1-1/4" X 45° X 48"	48	22.55	11	522	70	365
EMTSW154548	00810138700754	1-1/2" X 45° X 48"	48	22.55	11	599	70	419
EMTSW204548	00810138700839	2" X 45° X 48"	48	22.55	12	765	70	536
EMTSW254548	00810138700914	2-1/2" X 45° X 48"	48	22.55	12	1109	70	776
EMTSW304548	00810138700976	3" X 45° X 48"	48	22.55	12	1351	48	648
EMTSW354548	00810138703618	3-1/2" X 45° X 48"	48	22.55	12	1793	40	717
EMTSW404548	00810138701034	4" X 45° X 48"	48	22.55	12	2020	40	808
EMTSW104560	00810138700655	1" X 45° X 60"	60	26	11	396	70	277
EMTSW124560	00810138700709	1-1/4" X 45° X 60"	60	26	11	598	70	419
EMTSW154560	00810138700761	1-1/2" X 45° X 60"	60	26	11	686	70	480
EMTSW204560	00810138700846	2" X 45° X 60"	60	26	11	876	70	613
EMTSW254560	00810138703625	2-1/2" X 45° X 60"	60	26	11	3258	50	1,629
EMTSW304560	00810138703632	3" X 45° X 60"	60	26	11	3452	50	1,726
EMTSW354560	00810138703649	3-1/2" X 45° X 60"	60	26	11	3385	50	1,692
EMTSW454560	00810138703656	4" X 45° X 60"	60	26	12	3956	50	1,978

Sizes 2-1/2" and larger shipped in palletized cartons or bulk. Radius A is the minimum per UL797. Dimensions B and C are reference dimensions. All dimensions are approximate. All special radius elbows are noncancelable and nonreturnable.



Rigid Conduit Special Radius Elbows



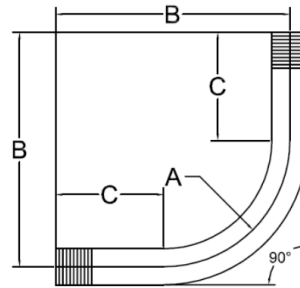
Our Rigid Special Radius Elbows are manufactured from prime conduit shell in 90°, 45°, and custom degrees of bend.

Our elbows are manufactured in accordance with the latest specifications and standard of ANSI C80.1(UL6).



Product Range

- Trade Sizes: 1/2" to 6"
- Stocking Radii: 24", 36", and 48"
- Special Order Radii: 60", 72", 96", 120", 144", and 150"



90° dimensional drawing

Features

- Made from high-grade mild strip steel for durability and sustainability
- Galvanized Rigid Steel
- The inside surface is obstruction free and smooth to reduce friction between conduit wall and wire.

Listings

- Underwriters Laboratories Standard for rigid conduit (UL6) file # E531580
- American National Standards Institute (ANSI® C80.1)
- National Electric Code® Article 344



90° Rigid Conduit Special Radius Elbows



Dimension and Weight Chart and Packing Schedule (GRC)

90° RIGID CONDUIT (GRC) SPECIAL RADIUS ELBOWS								
ITEM #	UPC	SIZE	MIN. UL RADIUS "A"	OFFSET "B"	STRAIGHT LENGTH "C"	WEIGHT/ 100PCS	PCS/CARTON	WEIGHT/ CARTON
			in.	in.	in.	lbs.		lbs.
RMCSW109018	00810138702932	1" X 90° X 18"	18	28	11	704	-	-
RMCSW129018	00810138703045	1-1/4" X 90° X 18"	18	28	11	953	-	-
RMCSW159018	00810138703151	1-1/2" X 90° X 18"	18	28	11	1149	-	-
RMCSW209018	00810138703250	2" X 90° X 18"	18	28	11	1529	108	1,651
RMCSW109024	00810138702949	1" X 90° X 24"	24	35	11	839	-	-
RMCSW129024	00810138703052	1-1/4" X 90° X 24"	24	35	11	1136	-	-
RMCSW159024	00810138703168	1-1/2" X 90° X 24"	24	35	11	1370	-	-
RMCSW209024	00810138703267	2" X 90° X 24"	24	35	11	1731	108	1,869
RMCSW259024	00810138703335	2-1/2" X 90° X 24"	24	35	11	2751	70	1,926
RMCSW309024	00810138703397	3" X 90° X 24"	24	35	11	3594	48	1,725
RMCSW359024	00810138703878	3-1/2" X 90° X 24"	24	35	11	4374	40	1,749
RMCSW409024	00810138703458	4" X 90° X 24"	24	35	11	5119	40	2,048
RMCSW109036	00810138702963	1" X 90° X 36"	36	47	11	1096	-	-
RMCSW129036	00810138703076	1-1/4" X 90° X 36"	36	47	11	1484	-	-
RMCSW159036	00810138703182	1-1/2" X 90° X 36"	36	47	11	1790	-	-
RMCSW209036	00810138703274	2" X 90° X 36"	36	47	11	2290	108	2,473
RMCSW259036	00810138703342	2-1/2" X 90° X 36"	36	47	11	3619	70	2,533
RMCSW309036	00810138703403	3" X 90° X 36"	36	47	11	4727	48	2,269
RMCSW359036	00810138703885	3-1/2" X 90° X 36"	36	47	11	5752	40	2,301
RMCSW409036	00810138703465	4" X 90° X 36"	36	47	11	6733	40	2,693
RMCSW509036	00810138703519	5" X 90° X 36"	36	47	12	10033	25	2,508
RMCSW609036	00810138703564	6" X 90° X 36"	36	47	12	16867	15	2,530
RMCSW109048	00810138702970	1" X 90° X 48"	48	60	11	1353	-	-
RMCSW129048	00810138703083	1-1/4" X 90° X 48"	48	60	11	1832	-	-
RMCSW159048	00810138703199	1-1/2" X 90° X 48"	48	60	11	2210	-	-
RMCSW209048	00810138703281	2" X 90° X 48"	48	60	11	2882	108	3,113
RMCSW259048	00810138703359	2-1/2" X 90° X 48"	48	60	11	4581	70	3,207
RMCSW309048	00810138703410	3" X 90° X 48"	48	60	11	5983	48	2,872
RMCSW359048	00810138703892	3-1/2" X 90° X 48"	48	60	11	7282	30	2,185
RMCSW409048	00810138703472	4" X 90° X 48"	48	60	11	8523	30	2,557
RMCSW509048	00810138703526	5" X 90° X 48"	48	60	12	12833	25	3,208
RMCSW609048	00810138703571	6" X 90° X 48"	60	60	12	15593	15	2,339
RMCSW109060	00810138702987	1" X 90° X 60"	60	72	11	1610	-	-
RMCSW129060	00810138703090	1-1/4" X 90° X 60"	60	72	11	2180	-	-
RMCSW159060	00810138703205	1-1/2" X 90° X 60"	60	72	11	2630	-	-
RMCSW209060	00810138703298	2" X 90° X 60"	60	72	11	3500	50	1,750
RMCSW259060	00810138703908	2-1/2" X 90° X 60"	60	72	11	5600	50	2,800
RMCSW309060	00810138703915	3" X 90° X 60"	60	72	11	7300	25	1,825
RMCSW359060	00810138703922	3-1/2" X 90° X 60"	60	72	11	8800	25	2,200
RMCSW409060	00810138703939	4" X 90° X 60"	60	72	11	10300	25	2,575
RMCSW509060	00810138703533	5" X 90° X 60"	60	72	12	14700	20	2,940
RMCSW609060	00810138703588	6" X 90° X 60"	60	72	12	18400	15	2,760

Sizes 2-1/2" and larger shipped in palletized cartons or bulk, with thread protectors on each end. Radius A is the minimum per UL797. Dimensions B and C are reference dimensions. All dimensions are approximate. All special radius elbows are noncancelable and nonreturnable.



45° Rigid Conduit Special Radius Elbows



Dimension and Weight Chart and Packing Schedule (GRC)

45° RIGID CONDUIT (GRC) SPECIAL RADIUS ELBOWS								
ITEM #	UPC	SIZE	MIN. UL RADIUS "A"	OFFSET "B"	STRAIGHT LENGTH "C"	WEIGHT/100PCS	PCS/CARTON	WEIGHT/CARTON
			in.	in.	in.	lbs.		lbs.
RMCSW104518	00810138702888	1" X 45° X 18"	18	12.5	11	514	-	-
RMCSW124518	00810138702994	1-1/4" X 45° X 18"	18	12.5	11	696	-	-
RMCSW154518	00810138703106	1-1/2" X 45° X 18"	18	12.5	11	840	-	-
RMCSW204518	00810138703212	2" X 45° X 18"	24	12.5	11	1118	108	1,207
RMCSW104524	00810138702895	1" X 45° X 24"	24	14.84	11	582	-	-
RMCSW124524	00810138703007	1-1/4" X 45° X 24"	24	14.84	11	788	-	-
RMCSW154524	00810138703113	1-1/2" X 45° X 24"	24	14.84	11	950	-	-
RMCSW204524	00810138703229	2" X 45° X 24"	24	14.84	11	1184	108	1,279
RMCSW254524	00810138703304	2-1/2" X 45° X 24"	24	14.84	11	1882	70	1,317
RMCSW304524	00810138703366	3" X 45° X 24"	24	14.84	11	2458	48	1,180
RMCSW354524	00810138703847	3-1/2" X 45° X 24"	24	14.84	11	2992	40	1,197
RMCSW404524	00810138703427	4" X 45° X 24"	24	14.84	11	3502	40	1,401
RMCSW104536	00810138702918	1" X 45° X 36"	36	18.35	11	704	-	-
RMCSW124536	00810138703021	1-1/4" X 45° X 36"	36	18.35	11	953	-	-
RMCSW154536	00810138703137	1-1/2" X 45° X 36"	36	18.35	11	1149	-	-
RMCSW204536	00810138703236	2" X 45° X 36"	36	18.35	11	1458	108	1,575
RMCSW254536	00810138703311	2-1/2" X 45° X 36"	36	18.35	11	2317	70	1,622
RMCSW304536	00810138703373	3" X 45° X 36"	36	18.35	11	3027	48	1,453
RMCSW354536	00810138703854	3-1/2" X 45° X 36"	36	18.35	11	3684	40	1,474
RMCSW404536	00810138703434	4" X 45° X 36"	36	18.35	11	4312	40	1,725
RMCSW504536	00810138703489	5" X 45° X 36"	36	18.35	12	10033	25	2,508
RMCSW604536	00810138703540	6" X 45° X 36"	36	18.35	12	16867	15	2,530
RMCSW104548	00810138702925	1" X 45° X 48"	48	22.55	11	839	-	-
RMCSW124548	00810138703038	1-1/4" X 45° X 48"	48	22.55	11	1136	-	-
RMCSW154548	00810138703144	1-1/2" X 45° X 48"	48	22.55	11	1370	-	-
RMCSW204548	00810138703243	2" X 45° X 48"	48	22.55	12	1789	108	1,932
RMCSW254548	00810138703328	2-1/2" X 45° X 48"	48	22.55	12	2844	70	1,991
RMCSW304548	00810138703380	3" X 45° X 48"	48	22.55	12	3714	48	1,783
RMCSW354548	00810138703861	3-1/2" X 45° X 48"	48	22.55	12	4520	40	1,808
RMCSW404548	00810138703441	4" X 45° X 48"	48	22.55	12	5291	40	2,116
RMCSW504548	00810138703496	5" X 45° X 48"	48	22.55	12	12833	25	3,208
RMCSW604548	00810138703557	6" X 45° X 48"	48	22.55	12	19320	15	2,898
RMCSW109060	00810138704004	1" X 45° X 60"	60	26	11	956	-	-
RMCSW124560	00810138704011	1-1/4" X 45° X 60"	60	26	11	1294	-	-
RMCSW154560	00810138704028	1-1/2" X 45° X 60"	60	26	11	1562	-	-
RMCSW204560	00810138704035	2" X 45° X 60"	60	26	11	2078	50	1,039
RMCSW254560	00810138704042	2-1/2" X 45° X 60"	60	26	11	3319	50	1,660
RMCSW304560	00810138704059	3" X 45° X 60"	60	26	11	4317	25	1,079
RMCSW354560	00810138704066	3-1/2" X 45° X 60"	60	26	11	5225	25	1,306
RMCSW404560	00810138704073	4" X 45° X 60"	60	26	12	6116	25	1,529
RMCSW504560	00810138704080	5" X 45° X 60"	60	26	12	8313	20	1,663
RMCSW604560	00810138704097	6" X 45° X 60"	60	26	11	10925	15	1,639

Sizes 2-1/2" and larger shipped in palletized cartons or bulk, with thread protectors on each end. Radius A is the minimum per UL797. Dimensions B and C are reference dimensions. All dimensions are approximate. All special radius elbows are noncancelable and nonreturnable.



Rigid Steel Conduit Nipples



Galvanized Rigid Conduit (GRC) nipples are to be installed on conduit raceway systems for the interconnection of conduit runs and other fittings.

Our nipples are manufactured from prime conduit shell in accordance with the latest specifications and standards of ANSI C80.1(UL6).

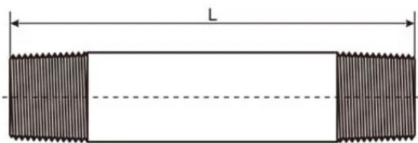


Features

- Nipples are produced in standard trade sizes from 1/2" to 6"
- Hot-dipped galvanized coating provides enhanced corrosion protection
- Available in custom lengths

Listings

- Underwriters Laboratories Standard for rigid conduit (UL6) file # E531580
- American National Standards Institute (ANSI® C80.1)
- National Electric Code® Article 344



Rigid Steel Conduit Nipples



Dimension and Weight Chart and Packing Schedule (Rigid Steel Conduit Nipples)

NIPPLES FOR RIGID CONDUIT (GRC)																
LENGTH	CLOSE				2"			2 1/2"			3"			3 1/2"		
SIZE	LENGTH (IN.)	STD. CARTON QTY.	MASTER CARTON QTY.	WEIGHT PER 100 (LBS)	STD. CARTON QTY.	MASTER CARTON QTY.	WEIGHT PER 100 (LBS)	STD. CARTON QTY.	MASTER CARTON QTY.	WEIGHT PER 100 (LBS)	STD. CARTON QTY.	MASTER CARTON QTY.	WEIGHT PER 100 (LBS)	STD. CARTON QTY.	MASTER CARTON QTY.	WEIGHT PER 100 (LBS)
1/2	1 1/8	25	600	6	25	600	12	25	400	15	25	400	19	25	300	22
3/4	1 3/8	25	400	9	25	300	14	25	300	19	25	200	24	25	200	28
1	1 1/2	25	300	16	25	200	22	25	200	28	25	150	36	25	150	43
1 1/4	1 5/8	25	150	22	25	150	28	25	150	37	25	100	47	25	100	55
1 1/2	1 3/4	25	100	28	25	75	34	25	75	44	25	50	56	25	50	68
2	2	25	75	44	-	-	-	25	50	59	25	50	72	-	40	88
2 1/2	2 1/2	-	40	84	-	-	-	-	-	-	-	40	100	-	30	120
3	2 5/8	-	30	118	-	-	-	-	-	-	-	20	130	-	15	157
3 1/2	2 3/4	-	20	160	-	-	-	-	-	-	-	-	-	-	-	-
4	2 7/8	-	20	180	-	-	-	-	-	-	-	-	-	-	-	-
5	3	-	5	240	-	-	-	-	-	-	-	-	-	-	-	-
6	3 1/8	-	5	350	-	-	-	-	-	-	-	-	-	-	-	-

Lengths longer than 12" and Special threads are available upon request. Both ends NPT threads conform to ANSI B1.20.1. Weights are approximate.

Dimension and Weight Chart and Packing Schedule (Rigid Steel Conduit Nipples)

NIPPLES FOR RIGID CONDUIT (GRC)																		
LENGTH	4"			5"			6"			8"			10"			12"		
SIZE	STD. CARTON QTY.	MASTER CARTON QTY.	WEIGHT PER 100 (LBS)	STD. CARTON QTY.	MASTER CARTON QTY.	WEIGHT PER 100 (LBS)	STD. CARTON QTY.	MASTER CARTON QTY.	WEIGHT PER 100 (LBS)	STD. CARTON QTY.	MASTER CARTON QTY.	WEIGHT PER 100 (LBS)	STD. CARTON QTY.	MASTER CARTON QTY.	WEIGHT PER 100 (LBS)	STD. CARTON QTY.	MASTER CARTON QTY.	WEIGHT PER 100 (LBS)
1/2	25	300	26	25	200	33	25	200	40	25	100	54	25	75	68	25	75	82
3/4	25	150	34	25	100	43	25	100	52	25	75	73	25	50	89	25	50	109
1	25	100	49	25	100	64	25	75	78	25	50	19	25	50	138	25	50	166
1 1/4	25	100	66	25	75	84	25	50	100	25	50	136	-	40	176	-	30	216
1 1/2	25	50	80	25	50	130	-	50	122	-	40	170	-	30	216	-	20	260
2	-	40	130	-	40	132	-	30	160	-	20	220	-	20	285	-	15	335
2 1/2	-	30	150	-	20	197	-	20	240	-	10	329	-	10	422	-	10	505
3	-	15	200	-	15	260	-	10	300	-	7	411	-	5	528	-	5	630
3 1/2	-	10	240	-	8	320	-	8	373	-	4	510	-	4	655	-	4	785
4	-	10	285	-	8	380	-	8	440	-	4	600	-	4	775	-	4	925
5	-	-	-	-	5	480	-	5	600	-	4	825	-	3	1055	-	3	1260
6	-	-	-	-	5	660	-	5	820	-	4	1125	-	3	1440	-	3	1720

Lengths longer than 12" and Special threads are available upon request. Both ends NPT threads conform to ANSI B1.20.1. Weights are approximate.



Steel Couplings



Rigid conduit couplings are used to connect two lengths of rigid metal conduit in a straight run or at a junction box. They provide a secure and rigid connection between the conduit sections, ensuring proper alignment and continuity of the conduit system.

Couplings are designed for use with threaded Rigid Conduit (GRC) & threaded Intermediate Conduit (IMC) conduit. Our couplings meet the latest specifications and standard of ANSI C80.1(UL6).

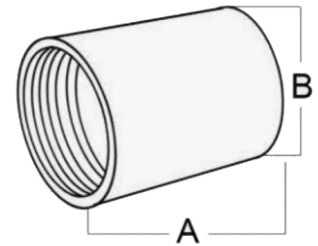


Features

- Couplings are produced in standard trade sizes from 1/2" to 6"
- Galvanized Steel
- NPSM Thread

Listings

- Underwriters Laboratories Standard for rigid conduit (UL6) file # E531580
- American National Standards Institute (ANSI® C80.1)
- National Electric Code® Article 344



Dimension and Weight Chart and Packing Schedule (Steel Couplings)

COUPLINGS							
ITEM #	UPC	SIZE	OUTSIDE DIAMETER "B"	MINIMUM ACCEPTABLE LENGTH "A"	STD. CTN. QUANTITY	WEIGHT/100 PCS	WEIGHT/CARTON
			in.	in.	pcs.	lbs.	lbs.
RMCCP05	00810138702161	1/2"	1.012	1.626	150	14	21
RMCCP07	00810138702178	3/4"	1.252	1.642	50	20	10
RMCCP10	00810138702185	1"	1.524	1.969	30	31	9
RMCCP12	00810138702192	1-1/4"	1.870	2.031	25	39	10
RMCCP15	00810138702208	1-1/2"	2.154	2.063	25	56	14
RMCCP20	00810138702215	2"	2.650	2.126	20	73	15
RMCCP25	00810138702222	2-1/2"	3.252	3.189	12	185	22
RMCCP30	00810138702239	3"	3.870	3.311	8	226	18
RMCCP35	00810138702246	3-1/2"	4.500	3.406	4	358	14
RMCCP40	00810138702253	4"	4.874	3.516	4	400	16
RMCCP50	00810138702260	5"	6.000	3.953	2	497	10
RMCCP60	00810138702277	6"	7.201	4.252	3	816	24

Minimum dimension per UL-6. Weights are approximate.



Contact Us Today

Phone

1 (408) 883-3806

Email

Sales@RepMaterials.com

CustomFab@Repmaterials.com

HQ

Representative Materials Company LLC

10061 Bubb Road - Suite 100

Cupertino, CA

95014

RMC

